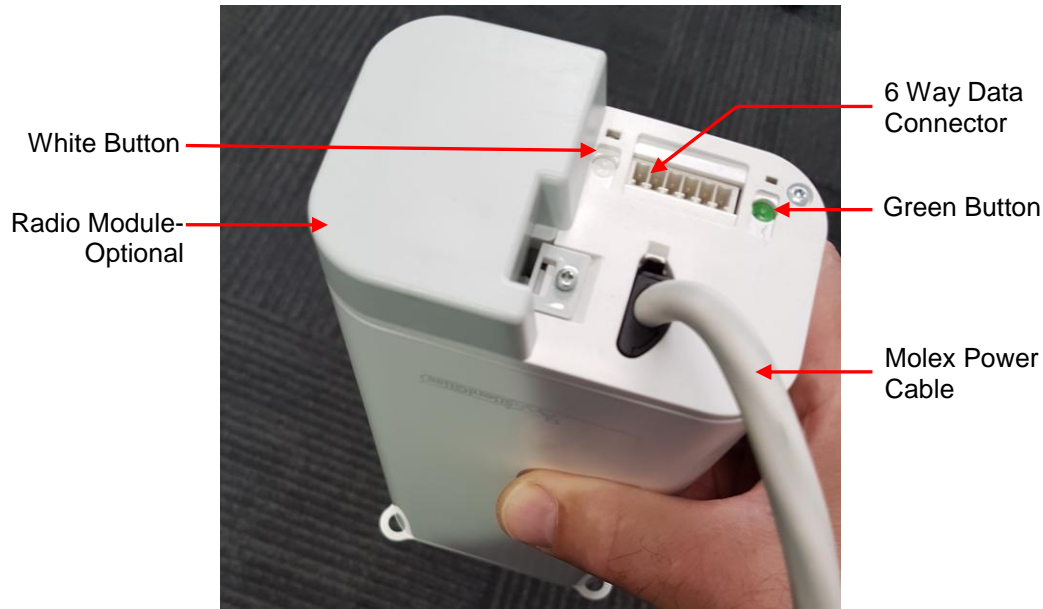


5600 motorised curtain tracks

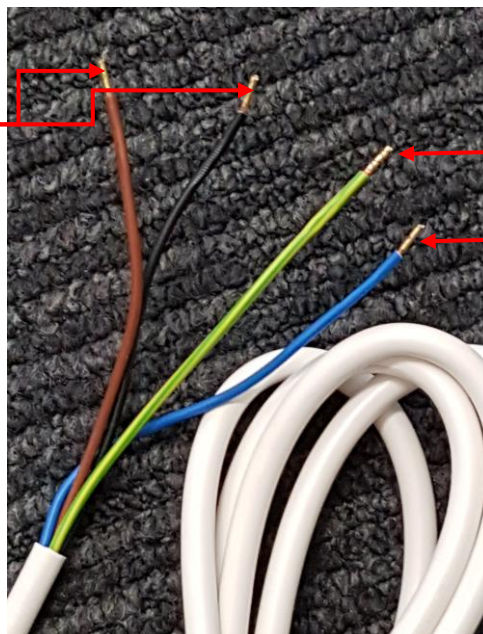


Features

- RTS or Standard
- Colours – White or anodised
- Motor can swivel through 360 degrees on mounting and bottom or top mount
- Buttons – Green (Auto limit setting) and White (Manual limit setting)

Wiring

Active wires – Brown and black. If the system is to run off RTS then join together

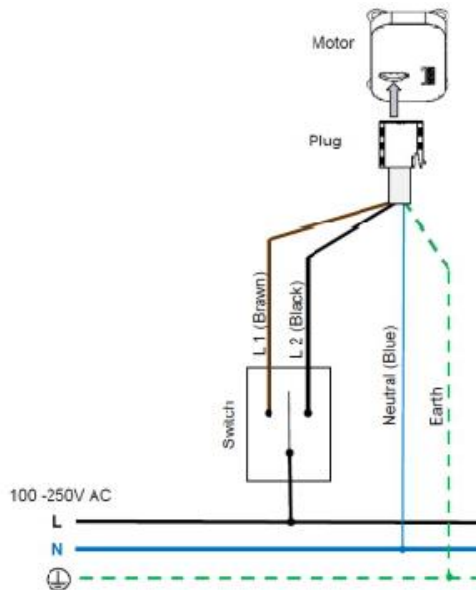


Earth wire – Yellow/green

Neutral wire - Blue

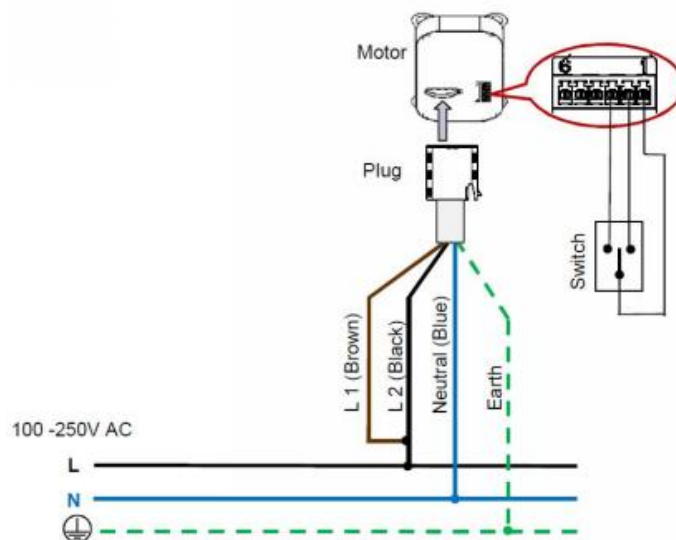
Mains switching

When operating through mains switching the brown and black wires are the 2 wires which are active and control open and close



Low voltage (dry contact) switching

For switching through low voltage (dry contact) the two active wires (brown and black) are joined together



Pins 2 and 3 on the 6-way plug are the switching triggers while pin 1 is the neutral

Limit Setting

Auto setting

- Push the green button. The motor will self set the limits.

Manual limit setting

If it is not desired that the limits are set to the track ends then use the white button for manual limit setting. For this you will need to have a registered remote, a wall switch or a Silent Gliss test lead.

- Push the white button on the motor. The manual programming LED will light up.
- Using the test lead, remote or wall switch, move the curtain until the desired limit position is reached.
- Drive the curtain in the other direction until the second limit position is reached.
- Drive the curtain in the first direction until the system stops. The limits are now set.

Setting the remote

- Disconnect the power for 10 seconds
- Reconnect the power
- Push the button on the back of the remote and hold it until the motor moves.
- When the motor begins to move again in any direction press the button on the remote that you wish to control that direction. The motor will pause, and then resume movement
- When the motor moves in the other direction press the button on the remote you wish to control that direction.
- The motor will cease moving. The remote has been set.

Faults and Troubleshooting

Apparent Fault	Possible Cause	Fault Elimination
The motor has power but will not run. The track is clear. No jam present.	Motor has lost its limits	Power the system down for 10 seconds. Power back up and then press the green button to set limits.
The motor has power but wont respond to the remote. Bump and run works.	The remote battery has failed	Remove the phillips screw from the base of the remote and replace the 2 AA batteries
	The remote has failed	Remote lights are working but it doesnt work on any of the blinds or curtains or there are no lights working on the remote. Replace the remote.
	The radio module has failed.	The remote is working on other blinds/curtains. Replace the radio module.
	The motor has a fault	The remote is working but the motor is not responding and replaciong the radio module has not corrected the fault. Replace the motor.
The motor has power but wont respond to the remote. Bump and run does not work.	The motor has failed	No response to the green or white button. Replace the motor.