

Solare Teknica

S E R I E S

Stylish, Robust &
Energy Efficient



SOLARE **TEKNICA**



SINCE
1987

What are Solare Teknica Awnings?

**Designed in
Australia, the
Solare Teknica
Awning Series is
a modern awning
system suited to all
exterior buildings.**

All awning styles within the series use common hardware for a consistent appearance irrespective of which awning style you choose. Personalise the perfect awning to suit your external shading requirements in 5 easy steps.





STEP 1 Awning Style

**Mix & match the awning styles
whilst still maintaining a consistent
appearance for your home.**



STEP 2 Headbox Options

For a modern contemporary look, the Solare Teknica Awning Series offers two designer headbox options.



Closed Headbox

Keeps the fabric clean from rain, UV & dirt enhancing longevity.



Open Headbox

Increased air circulation around the roller minimising heat build up for PVC skins.



Open Roller

A modern industrial look & is the ideal choice to reduce costs.

STEP 3 Operating Options

The Solare Teknica Awning Series has been developed to offer maximum flexibility for operation.

Manual Crank

The geared crank ensures easy operation that is not dependent on your strength.



Standard Spring Operation

Allows you to manually adjust the height of the awning & secure using either the sliding bolt system or hold down clip option.

Light Lift

An innovative operating option allowing you to raise & lower the awning to any desired position by simply moving the bottom rail by hand.

Motorisation

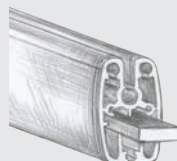
Incorporating the best of technology & design, control your awning with a touch of a button. A range of premium & cost effective motorisation solutions are available.

STEP 4 Bottom Rail Accessories

The Solare Teknica Awning Series Bottom Rail holds the fabric taut & minimises any movement in windy situations. Designed with a subtle modern curve, it seamlessly blends with the headbox aesthetics.

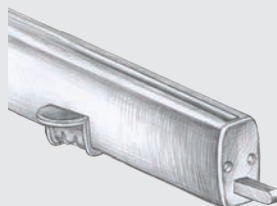
Weight Bar

An additional weight bar can be inserted into the heavy duty bottom rail. This is beneficial for smaller awnings that require additional weight to reduce bottom rail bounce & increase fabric tension.



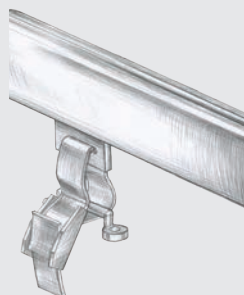
Locking Bolt

Secures the awning into the universal floor mount bracket or breaching staple.



Hold Down Strap

Hold down straps can be used to hold the awning down at various points across the width of the awning. Similar to the locking bolts, the hold down clips insert inside the bottom rail for a clean bottom rail finish.



Pile Brush & Valance

The floor surface is often not perfectly level. When an awning is installed over a wide width there will be room for light gaps, insects, debris, wind & rain to enter.

With the ability to insert either pile brush or a fabric valance, this gap can be eliminated therefore maximising the functionality of the awning. These inserts also protect the bottom rail from chipping if dropped to the ground quickly.



STEP 5 External Fabric

a. Mesh

b. Canvas

c. Acrylic

There are numerous choices of awning fabric on the market. When selecting your fabric, keep the following in mind.

Air flow

If you are enclosing a verandah or patio, consider if you still want to have a nice cool breeze coming through, if so an open weave sunscreen is best.

Privacy & view through

There are open & closed weave awning fabrics. Consider if you want day or night time privacy. An open weave fabric in a dark colour gives fantastic view through in the day, but also allows others to see in at night.

Durability

Be mindful that when a fabric is used outdoors it is exposed to the elements. Fabrics with DURAGUARD® Fabric Protector effectively repel most stain causing agents with its proven, water based, preventative formula. This fabric protection is totally invisible & has high levels of stain repellence. It makes cleaning & maintaining the fabric so much easier.

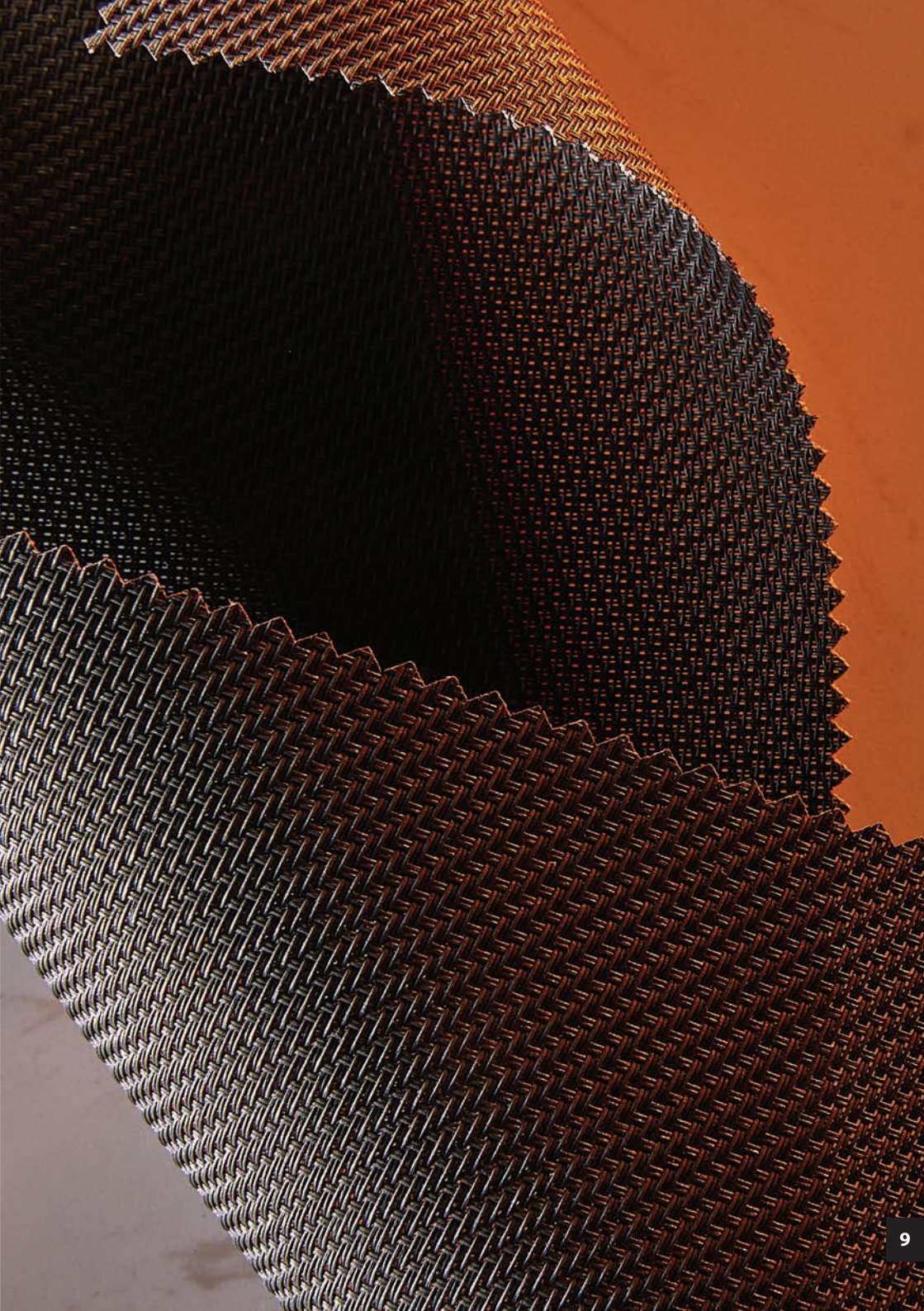
Colour fastness

Ensure the fabric you choose has excellent fade resistance to the sun. Any fabric with fade resistance result of 6 & above will ensure your fabric remains the colour you selected for many years to come.



Stance Fibreglass External Sunscreen is a naturally fire resistant twill weave external screen using an Enduris® Fibreglass yarn made in Europe. Offering exceptional performance and stability, Stance is particularly suitable for side restrained/zip awning systems and is the perfect partner for the Solare Teknica Awning Series.

- Stance Fibreglass fabric is 26% STRONGER in tensile strength compared to polyester external screens, performing better under tension and pressure.
- Contains 16% higher yarn content compared to polyester screens reducing elongation in the fabric enabling it to perform better in harsh environments without stretching.
- Stance Fibreglass screen is less likely to stretch compared to polyester screens. Independent testing shows polyester screens are 5x times more likely to stretch compared to Stance Fibreglass screen (5% openness). Awnings using Stance Fibreglass therefore maintain a better appearance for a longer period of time.
- Stance Fibreglass fabric is tested for Australian conditions with superior fade resistant qualities whilst still blocking out high levels of solar heat and harmful UV rays.

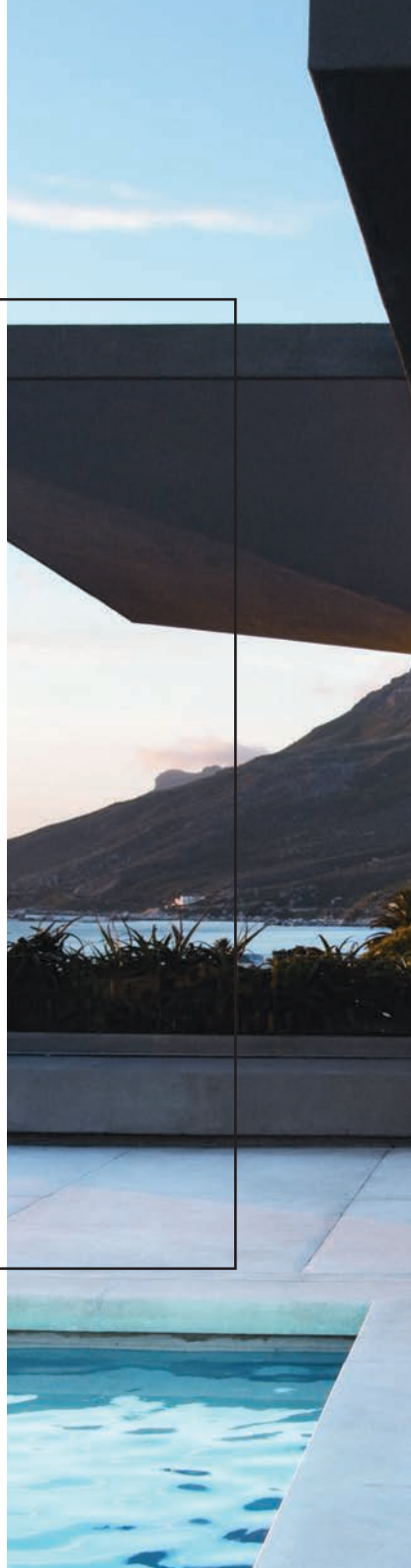


Solare Teknica 1000

Straight Drop Awning

A traditional awning style that uses no guides making it ideal for sun/UV protection, air flow & where channels are not suitable.

This is the entry level product for the Solare Teknica Awning Series.



Open Roller

A modern industrial look is offered by exposing the componentry. By eliminating the aluminium headbox profiles, the price is significantly reduced.

Bottom Rail End Caps

Provide a neat, clean finish for the drop awning giving it a complete, premium look.

Hold Down Straps

Can be used to hold down the awning at various points across the bottom rail & assists in minimising bottom rail movement in stronger winds.

Solare Teknica 2000 Cable Guide Awning

**A great
contemporary
straight drop
option for sun/UV
protection, air flow
& where channels
are not suitable.**

The cables are high tensile
2.5mm 316 grade marine
stainless steel, making them
perfect for coastal applications.





Bottom Rail End Caps

By floating in and out of the bottom rail the awning operates smoothly without putting pressure on the cable.



Solare Teknica 5500

Pivot Arm Awning

This awning projects the fabric off the window, with the arms & fabric forming an arc that allows air to flow behind the awning.

This system is a heavy duty contemporary design ideal for larger windows that can be opened whilst the awning is projected.





Heavy Duty Pivot Arm

Provides excellent fabric tension, even with awning widths up to 5 metres.

Open Headbox

Increases air circulation around the roller minimising heat build up.

Open headbox is ideal for the Pivot Arm Awning & can also be used in front rolled Cable Guide & Straight Drop Awnings.

Front Rail

Designed to have the same curve as the Straight Drop bottom rail allowing flexibility to mix & match the awnings throughout your home maintaining a design consistency.

Solare Teknica 5000

SRS - Side Retention System

**A straight drop
option ideal for
sun/UV protection,
insect resistance,
windy applications,
enclosing a balcony
plus creating privacy.**

The fabric is tensioned by utilising a floating channel, located within the special two piece side channel, eliminating the possibility of fabric "blow outs" or light gaps.





Light Lift Operating Option with SRS

Allows you to raise & lower the awning to any desired position by simply moving the bottom rail by hand.

The internal smooth spring mechanism provides you with lightweight & effortless operation without resistance.

Solare Teknica Awnings proven to reduce cooling energy costs by up to 60%*

Solare Teknica Awnings have been independently tested & proven to significantly reduce cooling energy costs by keeping a standard* home at a consistent & comfortable temperature throughout the summer months.

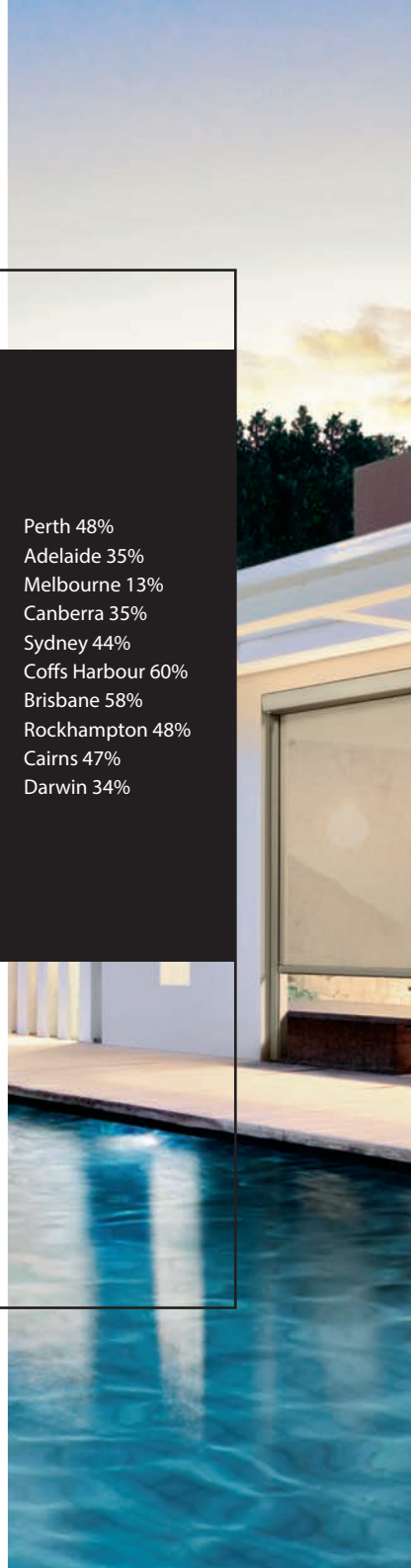
Wind Load

Solare Teknica Awnings have been tested to comply with a Class 3 level of Wind Resistance under European standard EN13561: 2009 - 01.

This level of Wind Resistance equates to a rating of '6' on the Beaufort Scale, which is equivalent to a wind speed of 49 km/h. It is recommended that all awnings be retracted in windy conditions.

Perth 48%
Adelaide 35%
Melbourne 13%
Canberra 35%
Sydney 44%
Coffs Harbour 60%
Brisbane 58%
Rockhampton 48%
Cairns 47%
Darwin 34%

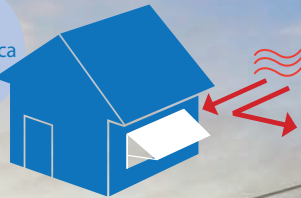
*Results based on a single storey, brick veneer home on a concrete slab using ducted air-conditioning and equally distributed windows with Solare Teknica Awnings installed with Canvas fabric. Based on independent modelling conducted by White Box Technologies in conjunction with Peter Lyons & Associates June 2013.



Without an
Solare Teknica
Awning



With an
Solare Teknica
Awning



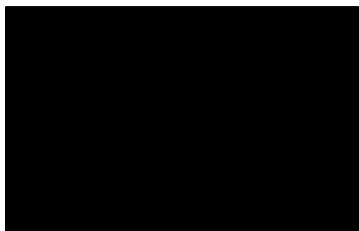
Reflects Heat
Keeps Interiors cool
Reduces Energy Costs

Solare Teknica Awnings Hardware Colour Range

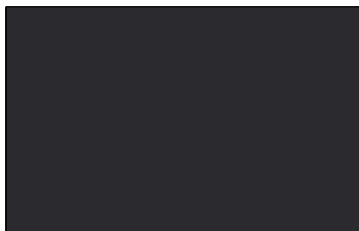
The Solare Teknica
Awning Series
is available in
5 factory finish
colours.

*Mill finish is available
for custom powder
coating.*

3 colours are
inspired by popular
BlueScope®
colours.



Satin Black - BlueScope®: Night Sky



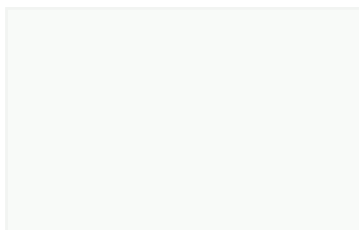
Nocturnal - Inspired by: Monument®



Silver Pearl - BlueScope®: Citi Pearl



Yalumba - BlueScope®: Classic Cream



Satin White

SOLARE **TEKNICA**™



Blinds
by Peter Meyer

SINCE
1987

QUALITY • DESIGN EXCELLENCE