

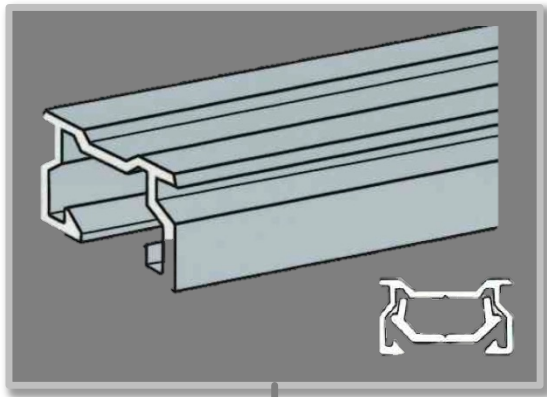


Head Office + Showroom
25 Richmond Rd Homebush NSW
Freecall Aust: 1 800 254 631
NZ Phone: +64 9 302 2499
www.petermeyerblinds.com.au



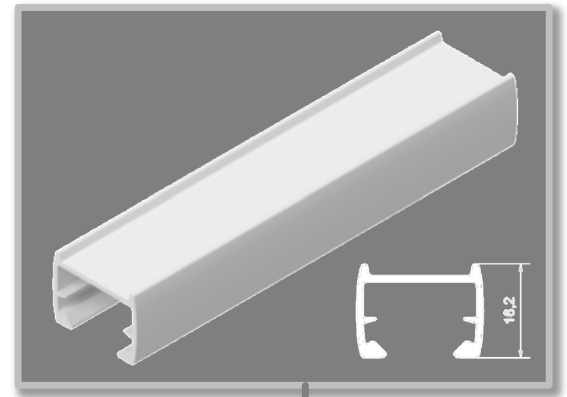
SINCE
1987

QUALITY + DESIGN EXCELLENCE

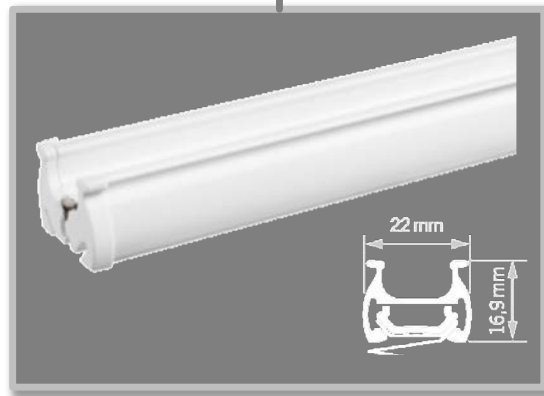


2001

2006:
New rail design
2011:
New rail design
2016:
New rail colour anthrazit



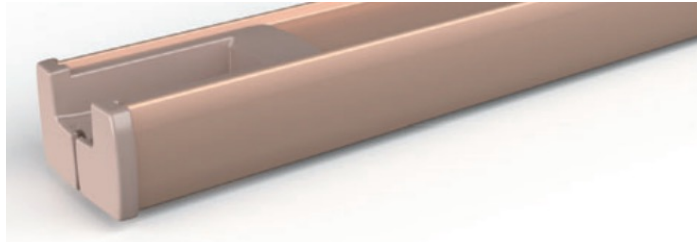
2021



2022 | Profile Colours.



20 white matt
(powder-coated)



26 bronze
(anodised)



02 silver
(anodised)



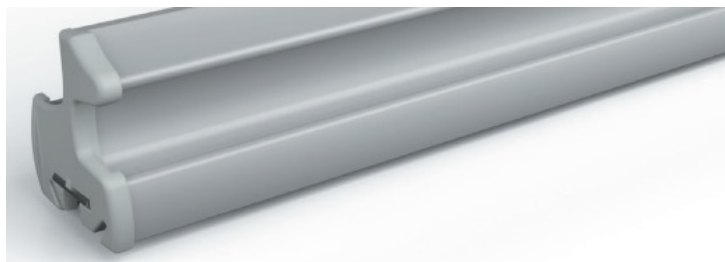
24 anthracite matt
(powder-coated)



05 black-brown matt
(powder-coated)



09 silver brushed
(brushed and anodised)
VS 2 only (extra charge)



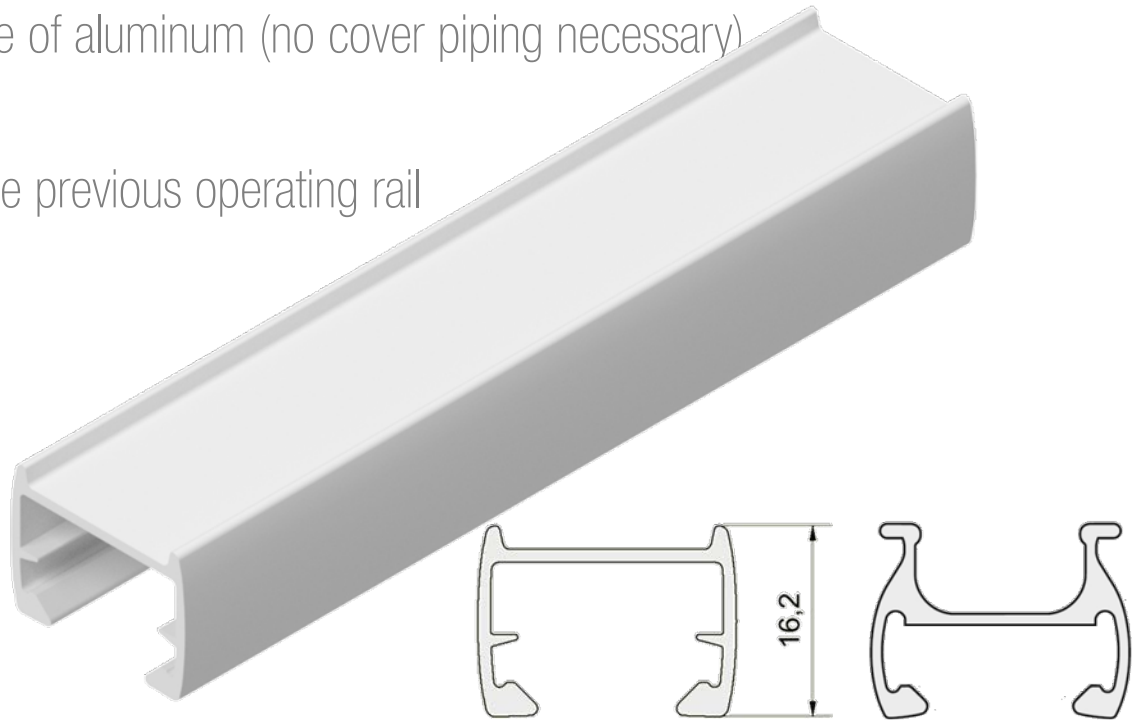
03 grey matt
(powder-coated)

VS 2 Slide, VS 2 Slide Comfort and DF
Comfort only

2022 | New Rail Design

Operating rail for tensioned systems:

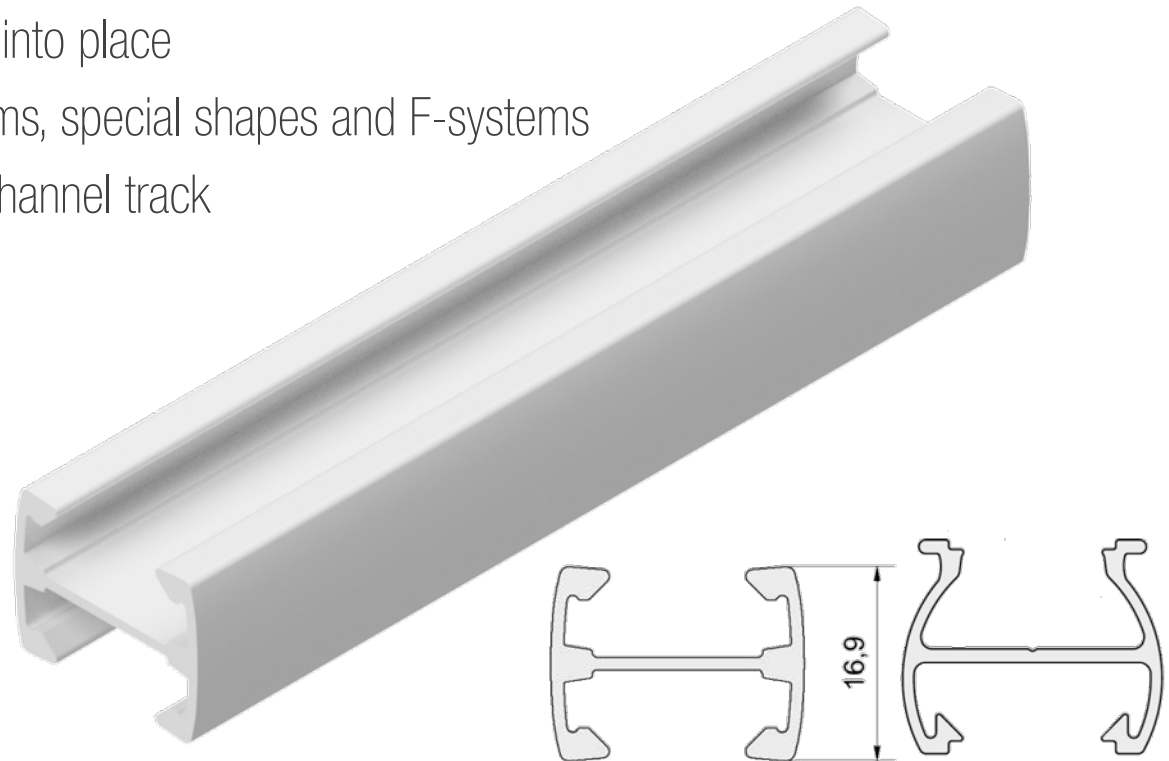
- Modern and timeless profile design
- Pure motion profile without clip webs
- Completely closed profile made of aluminum (no cover piping necessary)
- Very easy to clean
- Lower and more stable than the previous operating rail



2022 | New Rail Design.

2 Channel Rail

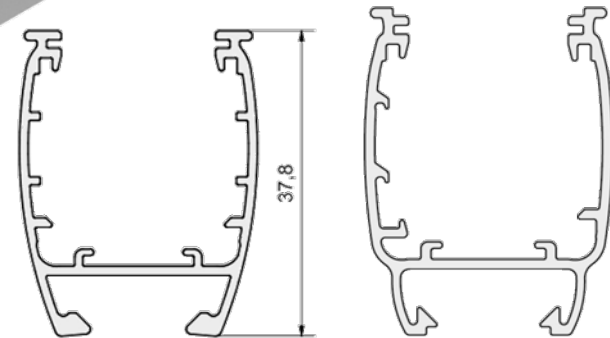
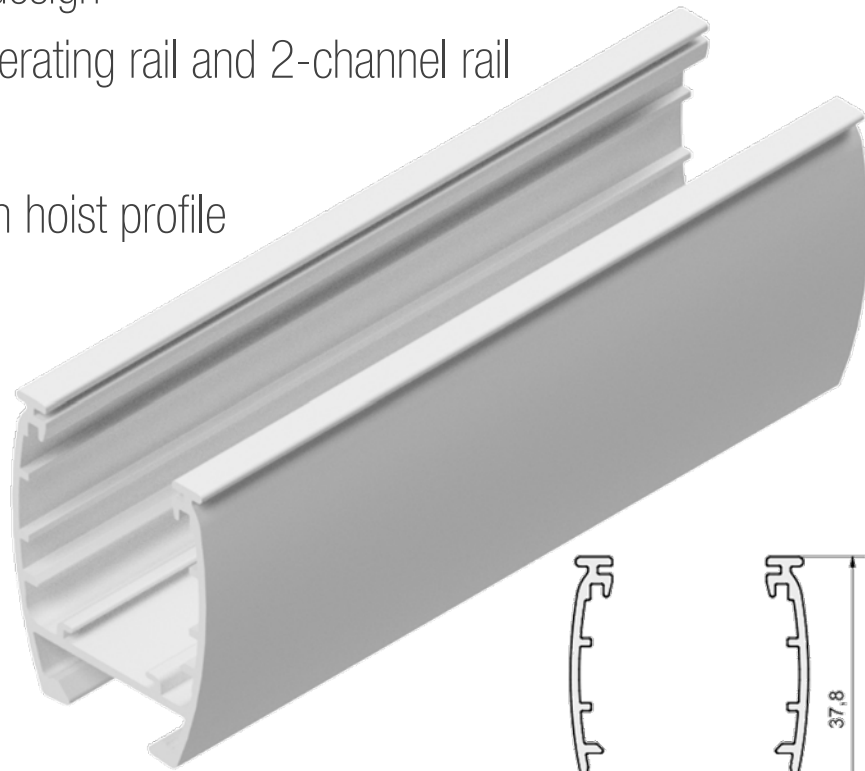
- Modern and timeless profile design
- No visible clip webs for a uniform appearance with the operating track
- Internal cover piping to click into place
- For use with day/night systems, special shapes and F-systems
- Lower than the previous 2-channel track



2022 | New Rail Design.

Head Rail for Chain Hoist / Crank / Electric System

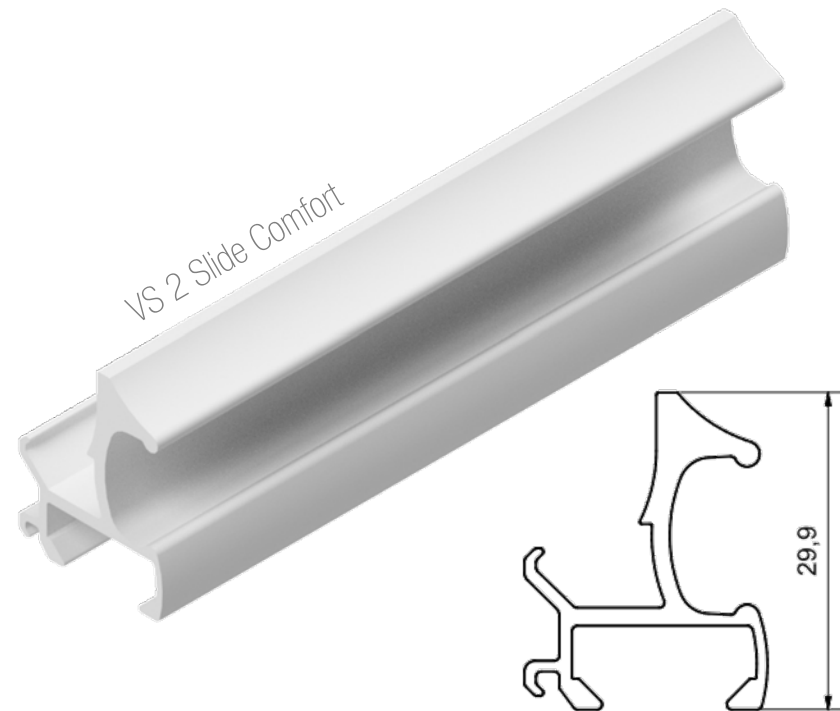
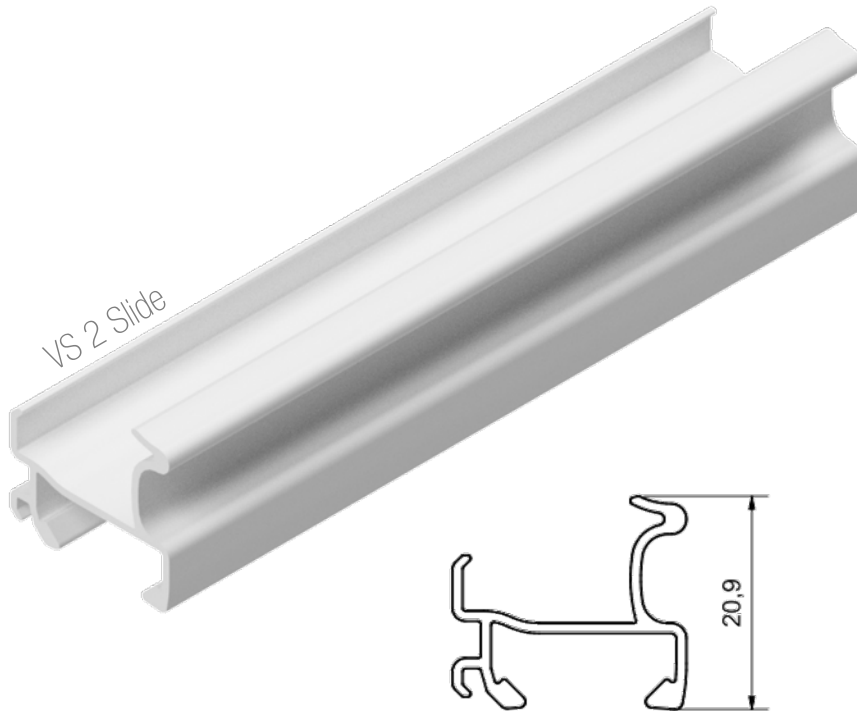
- Modern and timeless profile design
- Visually adapted to the VS operating rail and 2-channel rail
- External clip bars
- Lower than the previous chain hoist profile



2022 | New Rail Design.

VS 2 Slide and VS 2 Slide Comfort Operating Rails

- Adaptation of the VS 2 Slide handle rail – Enlargement of the handle recess
- VS 2 Slide Comfort with magnetic fixing



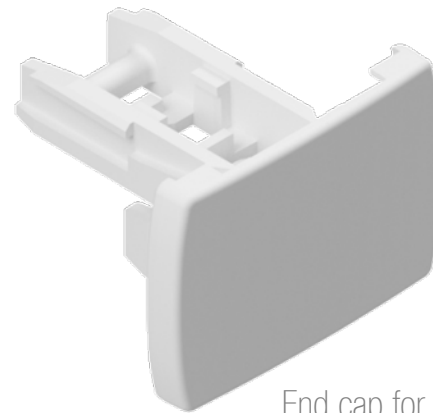
End Caps.

End caps operating rail

- End caps are held in place by a locking pin in the profile to prevent slipping out
- No wear of the cord due to internal metal bracket
- With or without magnetic fixation



End cap for rail

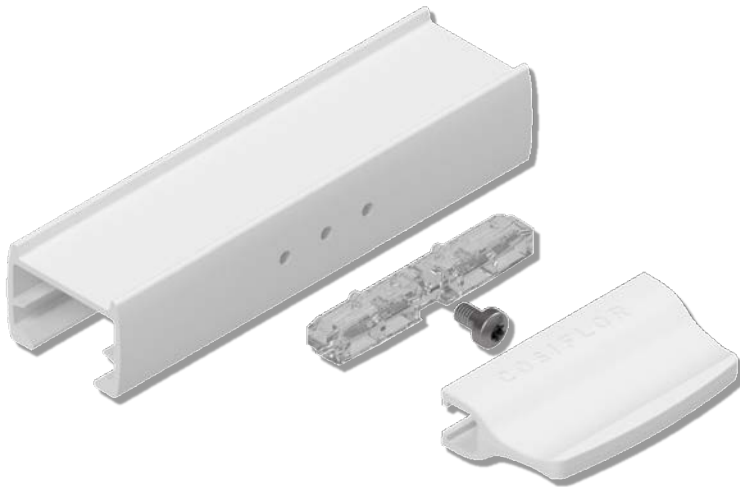


End cap for 2-channel rail

2022 | Operating Handle.

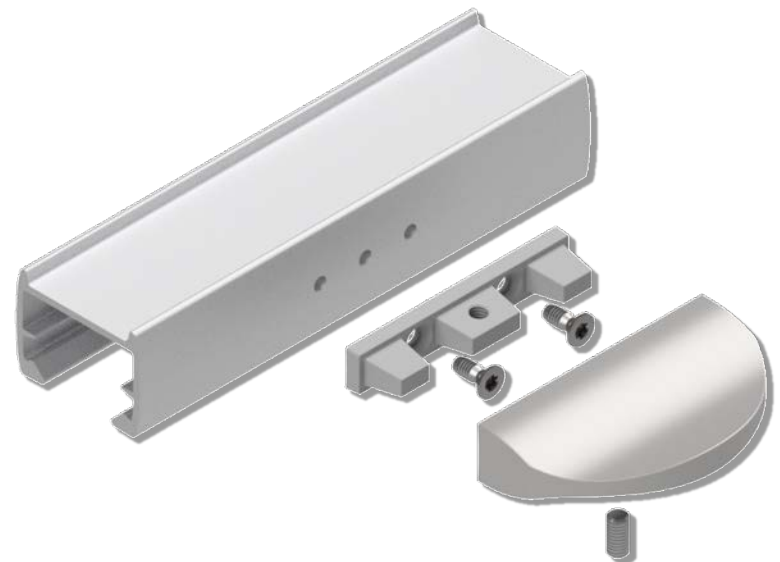
Handle (plastic)

- Only one handle adapter for all profiles, so the handles are always centered in height
- The handle will be connected to a mini adapter so it doesn't built much height on the handle bar
- The handle is also suitable for operating rod



Design Handle (metal)

- The design handle sits on the same position like the plastic handle and can thereby be upgraded
- Special lower adapter made of metal so it doesn't built much height on the handle bar
- The handle adapter is completely covered by the design handle



2022 | Fitting Options.



Tension Shoe

- For fitting in the glazing rebate or fitting bracket.



Clamp Bracket

- For screwless fitting on the window frame.
- The blind runs inside the glazing rebate.



Beading Bracket

- For fitting on the glazing bead



Tension shoe base with adhesive plate (VS 2 only)

- For fitting on the glazing rebate with adhesive plates
- The blind runs inside the glazing rebate



Clamp Bracket

- For screwless fitting on the window frame



Tension shoe base with adhesive plate (VS 2 only)

- For fitting on the glazing rebate even with small rebate depth
- The blind runs inside the glazing rebate

2022 | Fitting Options.



Adhesive rail VS 2 Slide and VS 2 Slide Comfort

- For screwless fitting on the glass
- With side guide and handle bar



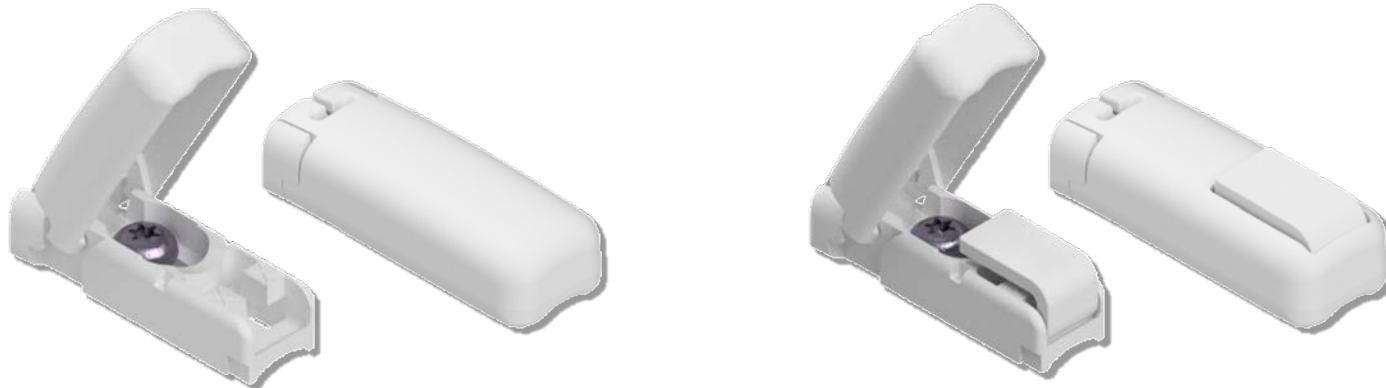
Adhesive rail VS 2 KL

- For screwless fitting on glass

2022 | Fitting Options.

Clamping Shoe

- Assembly by means of magnetic, corrosion-protected Torx screw
- Dismantling is always on the front side - the locks on the front and back side are released at the same time.
- the upper part of the clamping shoe fits all common mounting variants (uniform mounting)
- magnets with higher holding force compared to other pleated blind systems



2022 | Fitting Options.

Anti Twist Item

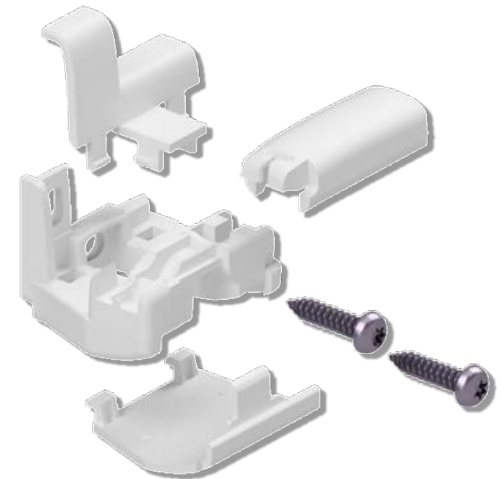
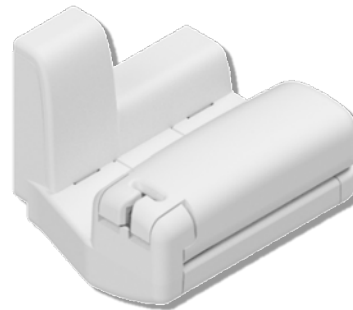
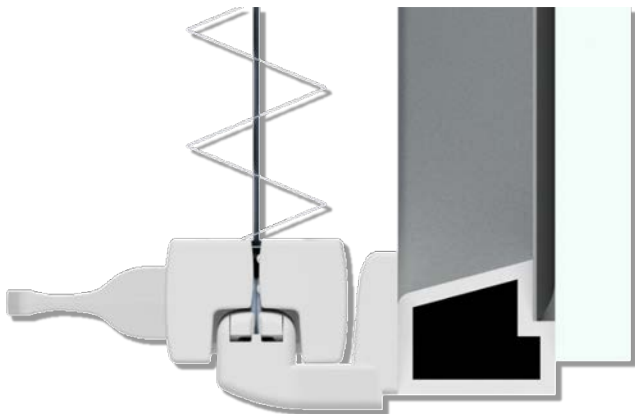
- Holds independently on the lower part of the clamping shoe
- The screw thread is free
- Twisting during mounting is not possible
- Only available in white



2022 | Fitting Options.

Beading Bracket

- The system passes over the rebate 5 mm more than before.
- so that less stray light enters the room
- Integrated mounting for upper part of clamping shoe
- Corner installation - automatic alignment with the glazing bead
- Generous adjustment possibilities through slotted holes



2022 | Advantages VS 1 – 3.

Clamp Bracket VS 2

- New clamp bracket with quick-fixing for the lower part of the clamping shoe
- No screwing of the lower part of the clamping shoe necessary
- Significant reduction in installation time



2022 | Fitting Options.

Adhesive Strip

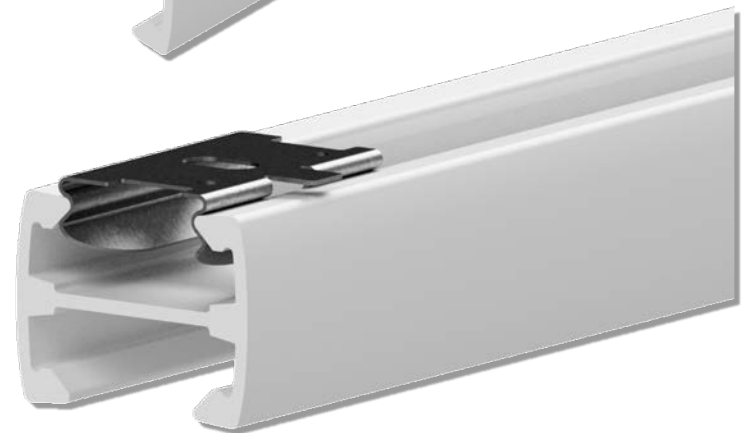
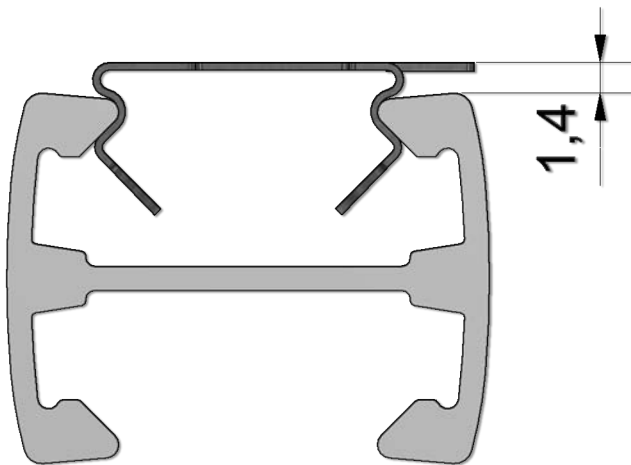
- On the VS 2 Slide and VS 2 Slide Comfort, the grip bar completely overruns the clamping shoe
- There is no light gap
- The clamping shoe also fits visually to the KL adhesive profile.



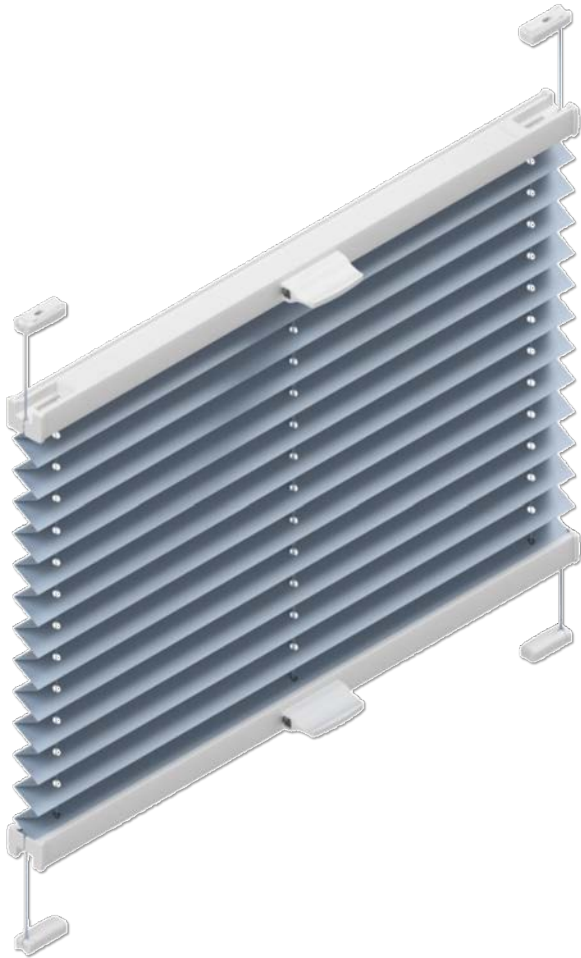
2022 | Fitting Options.

Mounting Clip

- Internal clip (almost concealed clip)
- Only 1.4 mm clearance to window rebate / ceiling
- Removal tab for damage-free release
- Suitable for 7.5° wheel chock (adaptable up to 45°)

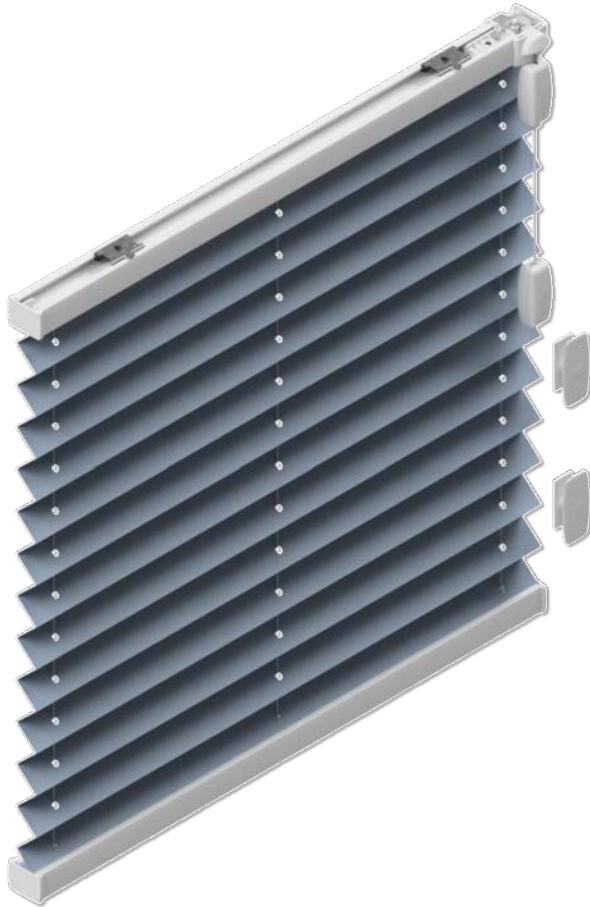


2022 | News VS 2.



- **New operating rail:**
 - ✓ Flatter, more modern and closed
- **New operating handle:**
 - ✓ Handle is always mounted centrally
 - ✓ With adapter plate - so that individual handles are also possible
 - ✓ Compatible with operating bar
 - ✓ Design handle optionally available
- **Improved mounting options:**
 - ✓ Improved glazing bead angle
 - ✓ Clamp bracket with quick fixing

2022 | News F1 - 3.



- New top and bottom rail
 - ✓ Flatter, modern and timeless
- New clip assembly
 - ✓ Internal clip
 - ✓ Only 1.4mm clearance between profile and ceiling / window rebate
- New cord brake
- New cord tassel Child Safety
- New tension shoe pendulum lock

2022 | News F1 – 3.

Cord Tassel & Cord Tassel “Child Safety”

- With and without Child Safety function
- New technical solution for up to 7 cords
- Quick and easy assembly also for the end user



2022 | News F1 – 3.

Pendulum Fuse

- New technical solution
- Smaller component
- First mount the lower part and then push on the upper part

Clamping Shoe Lower Part



Tension Shoe Upper Part

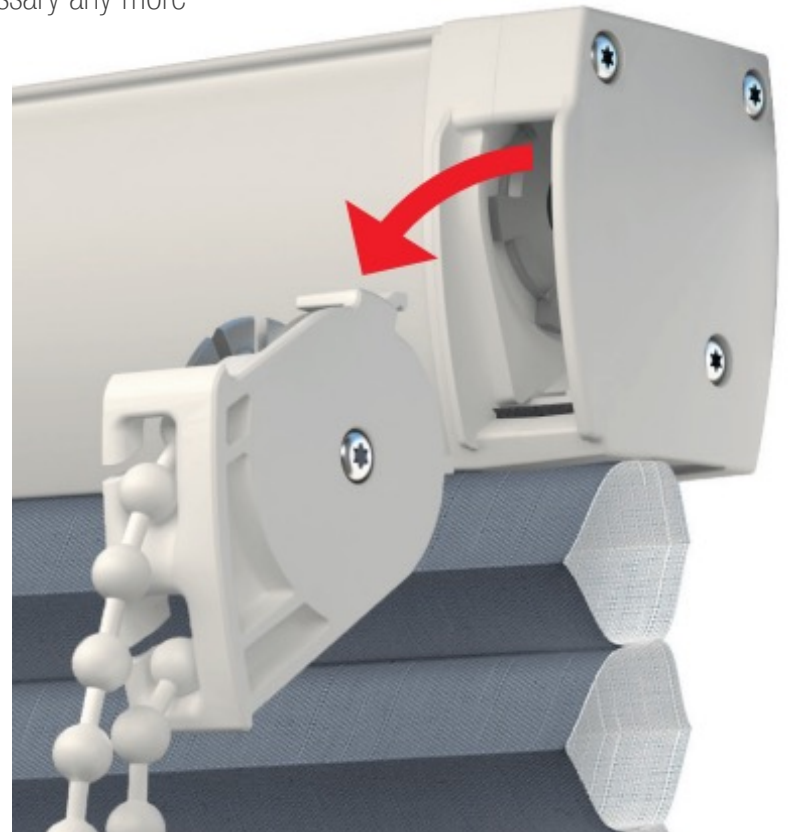
2022 | News F4.



- New top and bottom rail
 - ✓ Adaptation to the new profile design
- New clip assembly
 - ✓ External clip
 - ✓ Only 1.5mm clearance between profile and ceiling / window rebate
- New chain drive

Chain Drive

- Gearbox with integrated Child Safety function - no chain holder necessary any more
- Transmission for comfortable operation even with heavy hangings



Thank You.



Head Office + Showroom
25 Richmond Rd Homebush NSW
Freecall Aust: 1 800 254 631
NZ Phone: +64 9 302 2499
www.petermeyerblinds.com.au



Last Updated: 26 July 2022